

The work of Belgian artist Ben Heine provides the basis for this resource. The example offers a useful model for featuring the work of any artist, which could be particularly useful for GCSE students. The PowerPoint presentation includes QRs to link with an online video.





- Ben Heine is a successful Belgian artist who started out as a journalist. He is a self-taught artist and photographer.
- His work has been exhibited and published worldwide and he has also produced commercial work for high profile clients such as Samsung and Mazda.
- He creates different sorts of artwork, but we are going to look at his 'Pencil Vs Camera' work and his technique of combining both to create visually interesting images.

Watch these videos to discover more about Ben Heine's work.

1



2



3



Video 1 = short
Video 2 = mid
Video 3 = long
Watch all 3 - there will be some duplication of images and facts.

An example of work by Ben Heine

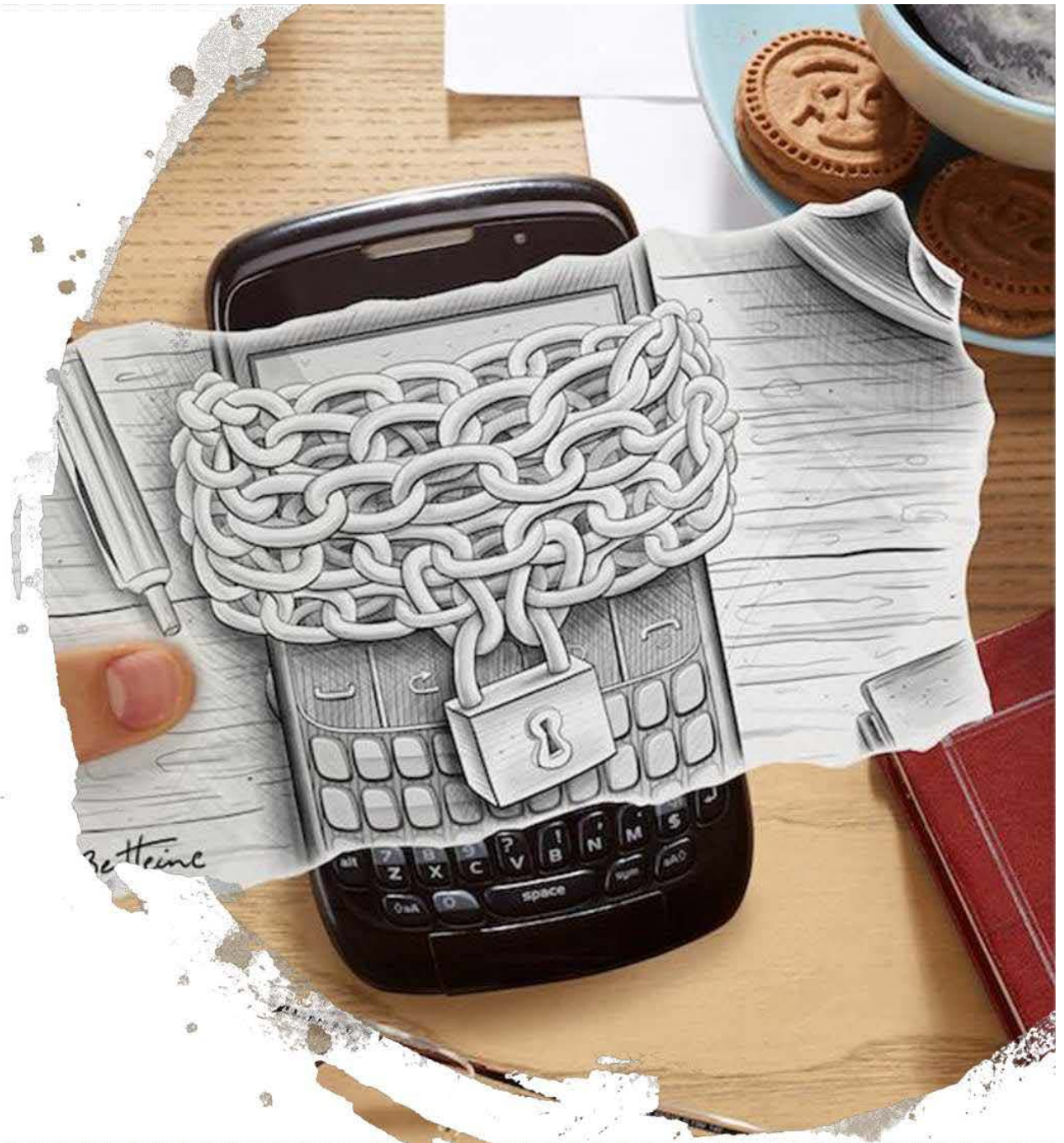


Look carefully at this image and ask yourself the following questions.

- How has Heine made this image?
- What techniques has he used?
- What equipment has he used?
- Why does Heine include his hand in this image?
- Does this image show a story or message?
- Has this image been carefully planned?

What are you going to do?

- You are going to research the work of Ben Heine by watching the videos. (Lesson 1)
- You are going to experiment with his way of working by creating a piece of work, inspired by Ben Heine, where you combine a photograph and a drawing. Your piece of work can have a message or narrative (story) in it. (Lesson 2)



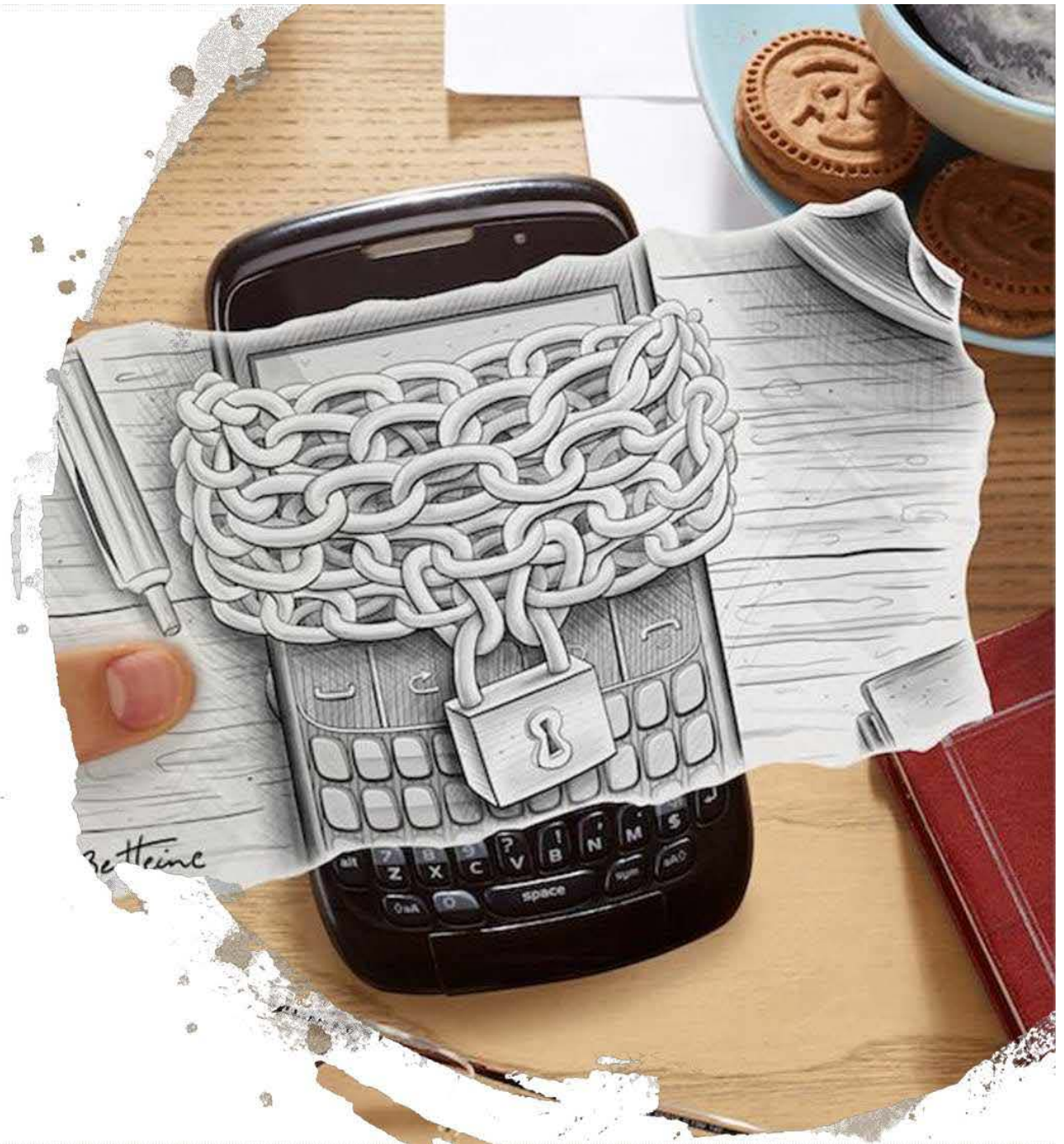
How are you going to do this?

You will need:

- Your ipad
- Your mobile phone / camera
- White paper or card with torn edges
- Drawing pencils
- A group of objects placed on a flat surface.

Step 1. Decide on what objects you wish to include in your photograph and place them carefully onto a flat surface.

Tip – do not include too many objects as your photo and drawing will become too complicated.



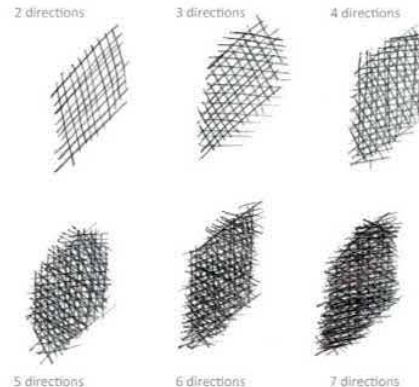
How are you going to do this?

Step 4 – Once you have decided which part of your photograph you are going to draw, decide on what you will add to your drawing, e.g. padlock and chain as in Heine's example.

Step 5 - Make a careful drawing of it, making sure that it lines up with the image on your ipad.

Tip- Heine uses a combination of cross-hatching and tonal shading in his drawings.

Cross hatching is a technique where you draw lines in one direction and then draw more at an angle to them. The more layers of lines you add, the darker your tone will be.



How are you going to do this?

Step 6 Place your finished drawing over the image on your ipad. Take a final photograph of your work using your mobile phone or camera. Do not forget to include your hand/finger holding your drawing in the final photograph.

Step 7 Admire your final image! Upload your final image onto Google classroom or email your work to :

