

GCSE English Language and GCSE English Literature

April 2023 Newsletter

Welcome back! We hope that you and your students had a good Easter break. In this term's edition we hope to provide you with general and subject-specific updates as well as information about revision resources as we approach the summer exams.

Contents	
1.	<u>Summer 2023 exams</u>
2.	<u>GCSE English Language NEA (Summer Series)</u>
3.	<u>Principal Examiner Reports</u>
4.	<u>Exciting new texts for GCSE English Literature</u>
5.	<u>Professional Learning (CPD) Provision 2022-23 - English Language</u>
6.	<u>Professional Learning (CPD) Provision 2022-23 - English Literature</u>
7.	<u>Educational Resources/Blended Learning Resources</u>
8.	<u>Knowledge Organisers</u>
9.	<u>Resources to help students prepare for the summer exams</u>
10.	<u>Resource Guides</u>
11.	<u>Online Exam Review</u>
12.	<u>Regional Support Team</u>
13.	<u>Key Dates</u>
14.	<u>Poetry Anthology</u>
15.	<u>Become an Examiner</u>
16.	<u>Develop Eduqas GCSE skills through WJEC ELC English</u>
17.	<u>Remembering Margaret Graham</u>
18.	<u>Next newsletter</u>

1. Summer 2023 exams

For 2023, given that public health restrictions are no longer in place the Department for Education and Ofqual have confirmed that:

- the usual arrangements for NEA will be in place
- GCSE English Literature – which had a choice of content and split papers – will return to full subject coverage and two separate compulsory papers – Component 1 and Component 2.
- No advance information for GCSE English Language

You can read the full guidance on the [Ofqual website](#). Centres are advised to check the Ofqual website regularly.

2. GCSE English Language NEA (Summer Series)

GCSE ENGLISH LANGUAGE – SPOKEN LANGUAGE (COMPONENT 3)

For GCSE English Language (9-1), Component 3 Spoken Language, grades must be entered on IAMIS by 5th May and **centres are required to submit audio-visual recordings for a sample of their cohort**.

For each candidate, centres will enter either P (Pass), M (Merit), D (Distinction) or N (not classified). Centres must ensure that, if they wish to apply for exemption for any candidates this has been applied for via the [JCQ exemption form](#). These candidates should be input as N.

IAMIS will be available to the designated account holders from 10th March. Please note that centres select their own sample for Component 3 using the formula in the table below.

Sample Sizes

No of cand at centre	No. of cand whose presentations must be recorded	Minimum no. of cand at each grade (D, M, P) +
30 or fewer	All cand	10++
Over 30	30	10+++

The sample should be representative of the teaching groups within the centre.

+ All candidates at a grade if the centre has fewer than the stated minimum. Candidates assessed as 'N' (Not Classified) should not be included.

++ For example, if a centre has 15 D candidates, 11 M candidates and 3 P candidates, all of these candidates will be in the sample.

+++ For example:

if a centre has 21 D candidates, 14 M candidates and 3 P candidates, the sample will consist of 10 of the D candidates, 10 of the M candidates and all of the P candidates, with 7 additional candidates (from D and/or M) to make the overall sample up to 30.

if a centre has no D candidates, 7 M candidates and 60 P candidates, the sample will consist of all of the M candidates and 23 of the P candidates.

Centres must provide audio-visual recordings of the presentations of a sample of candidates to their designated Spoken Language monitor. The USB/ removable device should be sent to the

monitor by **5 May** at the latest.

Please note that only the audio-visual recordings should be sent to the monitor. No paperwork is required.

Further information on conducting and recording the presentations can be found [here](#).

A candidate may request to carry forward a previous grade for the Spoken Language Endorsement, even if it was awarded by a different awarding body. In such cases, centres must ensure the candidate is entered using the same Unique Candidate Identifier (UCI) as was used when the candidate previously obtained the endorsement, then input a 'Carry Forward' indicator on the online system as normal.

Head of Centre Declaration

The Head of Centre must sign a [declaration](#) in order to confirm that reasonable steps have been taken to ensure that all candidates entered for WJEC Eduqas GCSE English Language have completed the spoken language assessment. The [declaration](#) should be signed by 5th May and emailed to spokenlanguagestatement@eduqas.co.uk.

Internal standardisation

Spoken Language standardised exemplars and commentaries are available on our [secure website](#) to support teachers standardising the marking of the NEA presentations. They can be located by selecting 'Subject-Specific Support Material including CPD and Exemplars' on the 'Resources' tab and then entering 'spoken language' in the search box. Remember to select the Eduqas brand in the 'Options' filters.

Subject-Specific Support Material including CPD & Exemplars

INFO : Use the dropdown lists to select subject, level and section and click "search"

Options

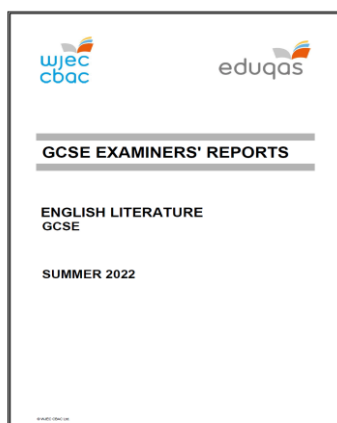
Subject: All | Brand: Eduqas | Level: All | Type of document: All | Publication Year: All | Language: English

Enter free text search: spoken language

SEARCH

We also have a wealth of guidance and support material on our English Language subject page under [key documents](#).

3. Principal Examiners' Reports



The Principal Examiners' reports provide feedback on each exam series and include lots of information about approaches to questions. Each report has a handy bullet pointed list at the end of each section to summarise key points and areas of concern and success.

Previous Principal Examiners' Reports can be found here:

[GCSE English Language](#)
[GCSE English Literature](#)

4. Exciting New Texts for GCSE English Literature

We are very excited to announce that we have some new texts coming to the Eduqas GCSE English Literature specification for first teaching in September 2023 and first exam series in Summer 2025.

Firstly, ***Boys Don't Cry*, by Malorie Blackman**, (which will replace *Never Let Me Go*, by Kazuo Ishiguro, from Post 1914 Prose) is being introduced as a fresh and engaging novel that will help bring a wider range of cultural diversity and representation into the English Literature specification. *Boys Don't Cry* has positive representations of black and LGBTQ characters and *The Times* has said 'it should be read aloud in every secondary school'. Malorie Blackman is a Black, British female writer who was honoured with an OBE for her services to Children's Literature and became Children's Laureate from 2013 to 2015. She is acknowledged as one of today's most imaginative and convincing writers for young readers. **The new Knowledge Organiser and Blended Learning resource (with Sample Assessment Materials) for this text is available on the Resources tab of the Eduqas GCSE English Literature subject page.**

Secondly, ***Leave Taking*, by Winsome Pinnock**, (which will replace *A Taste of Honey*, by Shelagh Delaney, in Post-1914 Drama) equally brings a wider range of cultural diversity and representation to the specification. It tells the story of two generations of a family of black women, where the mother is originally from the Caribbean. *The Guardian* calls it an 'insightful and honest tale of the anguish of immigrants' and a 'pioneering portrayal of the lives of black Britons', and names Winsome Pinnock as 'the godmother of Black British playwrights'. **The new Knowledge Organiser and Blended Learning resource (with Sample Assessment Materials) for *Leave Taking* is now available on the Resources tab of the Eduqas GCSE English Literature subject page.**

Finally, ***Twelfth Night*, by William Shakespeare**, will replace *Henry V* in the Shakespeare section. With its timeless depictions of unrequited love and human behaviours, it is hoped that this play will add some comedy and revelry to the Shakespeare section of the specification. Its themes of class, identity, gender and same-sex attraction are also relevant to our current cultural moment, hopefully making it a popular choice with schools and colleges. **The new Knowledge Organiser and Blended Learning resource (with Sample Assessment Materials) for *Twelfth Night* is now available on the Resources tab of the [Eduqas GCSE English Literature subject page](#).**

5. Professional Learning (CPD) Provision Summer 2023 – English Language

Thinking about Eduqas GCSE English Language FREE EVENT

20 June 2023 4:30 pm to 5:30 pm

This free MS Teams online session led by the Eduqas regional team is for teachers considering using the qualification. We will provide an overview of the specification, support resources and training, and there will be an opportunity to ask questions.

Book your place [here](#).

Materials from Previous CPD Events

Previous CPD materials for GCSE English Language, including our latest autumn/winter CPD package can be found [here](#).

6. Professional Learning (CPD) Provision Summer 2023 – English Literature

Thinking about Eduqas GCSE English Literature FREE EVENT

29 June 2023 4:30 pm to 5:30 pm

This free MS Teams online session led by the Eduqas regional team is for teachers considering using the qualification. We will provide an overview of the specification, support resources and training, and there will be an opportunity to ask questions.

Book your place [here](#).

Materials from Previous CPD Events

Previous CPD materials for GCSE English Literature, including our latest autumn/winter CPD package can be found [here](#).

7. Educational Resources / Blended Learning Resources

Blended Learning Resources

Blended Learning Resources are designed to complement traditional face to face teaching with an online learning pack that allows students to learn at their own pace. They can be used as revision by students, as part of catch up or for flipped learning. These resources should not be seen as a way to deliver the content in a classroom setting and should always be blended with conventional method.

English Literature

Our English literature Blended Learning Resources contain interactive self-study content covering key characters, themes and approaches. We have Blended Learning Resources for the following texts:

- [Leave Taking*](#)
- [KS 3-4 Bridging Unit based on A Christmas Carol*](#)
- [Lord of the Flies](#)
- [An Inspector Calls](#)
- [Blood Brothers](#)
- [A Christmas Carol](#)
- [The Strange Case of Dr Jekyll and Mr Hyde](#)
- [Unseen Poetry](#)
- [Boys Don't Cry*](#)
- [Twelfth Night*](#)

*New resource recently added

English Language

These student-focused blended learning resources for GCSE English language cover key skills such as:

- [comparison](#)
- [planning](#)
- [proofreading](#)
- [developing detail](#)
- [narrative and transactional writing](#)
- [analysis](#)

Teaching grammar



'Grammar for writing' is the focus for [this video](#). Covering word class, clauses and sentence structure, and exploring techniques such as slow writing and 'pointless prepositions', there are plenty of practical ideas to take into the classroom.

New Centre Guide – GCSE English Literature

Eduqas GCSE English Literature
Information for new centres, NQTs
and those wishing to refresh their
knowledge.



[This resource](#) provides useful information for centres teaching the Eduqas GCSE English Literature specification for the first time, along with NQTs and those wishing to refresh their knowledge of the specification.

New Centre Guide – GCSE English Language

Eduqas GCSE English Language
Information for new centres



[This resource](#) provides useful information for centres teaching the Eduqas GCSE English Language specification for the first time, along with NQTs and those wishing to refresh their knowledge of the specification.

Component 3 – GCSE English Language

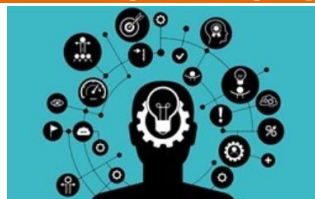
GCSE English Language - Component 3



[This resource](#) supports teachers in the delivery and assessment of Eduqas GCSE English Language Component 3 (Spoken Language).

8. Knowledge Organisers

GCSE English Language and English Literature knowledge organisers



These resources provide a bank of sample knowledge organisers to support the learning of [GCSE English Language](#) and [GCSE English Literature](#). These could be used for revision or as a starting point for creating your own knowledge organisers.

For GCSE English language we have knowledge organisers for the following:

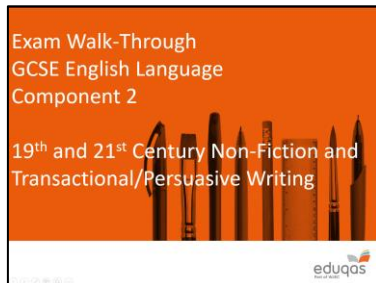
- [Comparison](#)
- [Evaluation](#)
- [Explain, comment and analyse](#)
- [Narrative Writing](#)
- [Non-fiction writing](#)
- [Proofreading](#)
- [Purpose, organisation and content](#)
- [Retrieval of explicit and implicit information](#)
- [Synthesising information](#)
- [Analysing texts](#)
- [Structuring writing](#)
- [Technical accuracy in writing](#)

For GCSE English Literature we have knowledge organisers for the following texts:

- [Macbeth](#)
- [Romeo and Juliet](#)
- [Twelfth Night \(new\)](#)
- [Blood Brothers](#)
- [Lord of the Flies](#)
- [Unseen Poetry](#)
- [Woman In Black](#)
- [Jekyll and Hyde](#)
- [A Christmas Carol](#)
- [An Inspector Calls](#)
- [War of the Worlds](#)
- [Leave Taking \(new\)](#)
- [Boys Don't Cry \(new\)](#)

9. Resources to help students prepare for the summer exams

Exam Walk Throughs – GCSE English Language



Aimed at learners, these [Exam Walk Throughs](#) offers practical hints and tips on how to effectively approach questions in the examination paper. You can complete the “mock” in a single sitting, tackle one or two questions at a time or revisit some parts of the presentation to reinforce your learning.

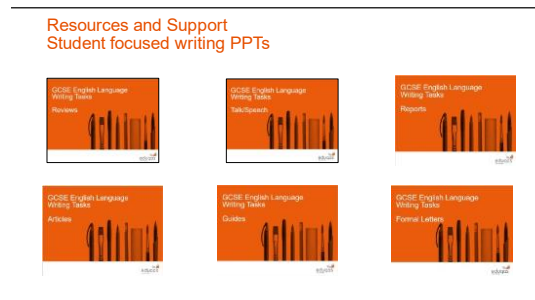
English Language transactional writing revision resources

These student focused revision PowerPoints and revision sheets will help learners prepare for Component 2 Section B.

Resources and Support
Student focused writing revision templates

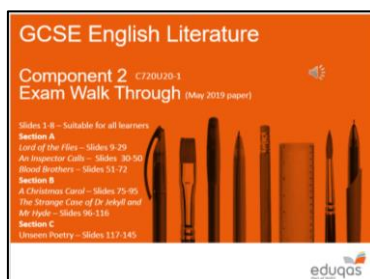


Resources and Support
Student focused writing PPTs



You can find all the materials [here](#).

Exam Walk Through – GCSE English Literature Component 1 and Component 2 (new)



Aimed at learners, these [Exam Walk Through](#) resources offer practical hints and tips on how to effectively approach questions in the examination paper. You can complete the “mock” in a single sitting, tackle one or two questions at a time or revisit some parts of the presentation to reinforce your learning.

10. Resource Guides

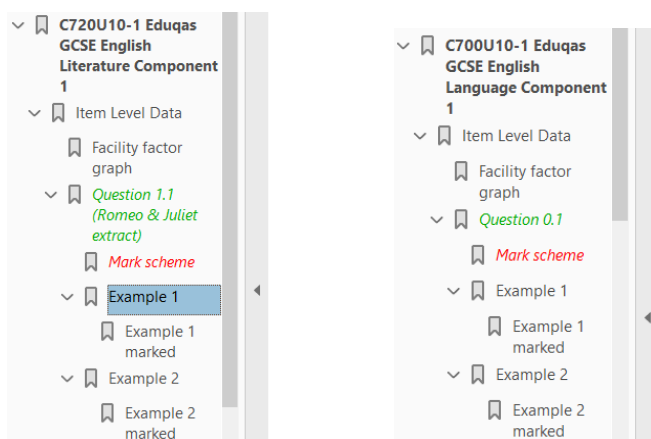


Our Resource Guides provide an overview of the support, guidance and resources available to those teaching the Eduqas GCSE English specifications across our suite of websites.

[GCSE English Language Resource Guide](#)
[GCSE English Literature Resource Guide](#)

11. Online Exam Review

You and your students may find it helpful to use our [Online Exam Review](#), which provides a number of clean and marked exemplars of candidate responses to key questions from previous GCSE English Language and GCSE English Literature exam series in an interactive format. These allow students to review others' responses and discuss ways in which they may be improved, thus developing their own skills.



If you are accessing the OER document in a web browser and are only able to see a single page, please download the document and re-open it in Adobe Reader in order to fully access the exemplar material.

See our [Catalogue of OER Exemplar](#) document on the [Eduqas GCSE English Literature subject page](#)

12. Regional Support Team

Did you know that we have a Regional Support Team who can offer you any support which you may need?

This includes:

- providing face-to-face and online advice to new and existing centres at a time which is convenient to the centre
- giving practical advice on the best resources for a subject including our digital resources and Online Exam Review
- supporting teachers who are new to a particular subject by going through assessment structure, exam papers, and where to find various resources needed for teaching the subject
- advising centres who are thinking of switching to us

The team is made up of former teachers who understand exactly what kind of support you need to get the most out of your classroom experience. And all the support which they offer is free of charge!

You can find out more, including the regional representative for your area, on our [Regional Support Team](#) page.

13. Key Dates

[GCSE English Language](#)

[GCSE English Literature](#)

14. Poetry Anthology

The poetry anthology can be ordered free of charge for centres taking GCSE English Literature with Eduqas. Please email poetryanthology@eduqas.co.uk stating **your centre name, centre number, the number of copies you require and a contact name.**

An electronic copy of the [poetry anthology](#) is available from the website.

We have a range of teaching and learning resources to support the anthology including our [using contexts effectively](#) resources which look at each of the poems in the anthology. You can find lots more on our [Resources](#) website.

15. Become an Examiner – spaces still available for 2023!



As the entry for Eduqas GCSE English Language and GCSE English Literature is growing, we are keen to appoint new examiners. Examining is an excellent way of learning more about the requirements of the exam and thus supporting your students and developing your skills. Training is face to face. You will be paid for attending the training as well as being reimbursed for all of your travel expenses. Rates of pay are good and you will have specialist direction from your Team Leader and constant support from the board. Marking is done online although the training is live. For further details, please see the [appointees section](#) of the website.

16. Develop Eduqas GCSE skills through WJEC ELC English



The [WJEC Entry Level Certificate](#) in English has been designed to more closely reflect the Eduqas GCSE in English Language. It can therefore provide a useful stepping stone, or a complement for students already following the course. Full details of the qualification may be found on the [website](#).

17. Remembering Margaret Graham

It is with great sadness that we share with you the news that Margaret Graham, an integral member of the WJEC Eduqas GCSE English Literature family over many, many years, has passed away.

After being a senior examiner for many years, Margaret was, for over a decade, the Chief Examiner for GCSE English Literature, devoting herself to compassionate examinations for the young people taking our qualifications. She was a passionate advocate for the joys and benefits of literary study for all children, an approach that was reflected in the papers she set and in her management of hundreds of examiners.

Those of you who were fortunate enough to have met Margaret delivering training at our CPD events, could not fail to have been impressed with her knowledge and authority, her clear thinking and understanding.

In more recent years, Margaret focused on WJEC Eduqas work that she loved and felt more impactful for young people: the creation of teaching and learning resources and the training of teachers.

We will miss her hugely and want to recognise the highly significant part she has played in shaping WJEC and Eduqas GCSE English Literature qualifications and assessments for generations of teachers and their learners.

18. Next newsletter

The next issue will be sent out in September 2023. In the meantime, if you have any questions, please get in touch.

Nancy Hutt
Subject Officer
GCSE English Language

029 2240 4288
gcseenglish@eduqas.co.uk

Julia Harrison
Subject Officer
GCSE English Literature

029 2240 4290
gcseenglish@eduqas.co.uk

Follow us on Twitter [@Eduqas_English](https://twitter.com/Eduqas_English).